

Column Flow

**CS2/CS3
InDesign Plug-in**

version 1.0

last revision: May 18, 2008

Column Flow

Contents

- 3 What is Column Flow?**
- 6 Installation**
Enabling and Disabling Plug-ins.
- 9 Purchasing Licenses and Activation**
- 11 Basic Setup**
- 12 Running Column Flow**
Paragraph Settings
- 14 Addendum**
What is “APID ToolAssistant”?
- 16 Acknowledgements**
- 17 License Agreement**

Column Flow

What is Column Flow?

Creating headers or footers which span multiple columns is a very difficult task in InDesign. This is because all column settings are set by the text frame. Creating different column settings requires creating a new text frame each time that the number of columns change. The text frames must then be manually positioned.

Column Flow attempts to simplify this process by allowing the setting the number of columns within paragraph styles. Each style applied in the story must have the number of columns defined.

The method *Column Flow* uses to set the number of columns is by adding a number prefix to the style name. All the styles must start with either a “1” or a “2”.

Once properly set up, *Column Flow* will flow the text and add / remove text frames as necessary to properly flow the text. It can flow text one page at a time. It can flow an entire story. It can even flow an entire document comprised of many stories.

To further insure proper positioning of the text frames, text blocks can be automatically aligned to the baseline grid, and specific paragraph styles can be defined as headers. (So they will always appear above the following text block.)

Below are some samples of documents laid out using *Column Flow*.

Column Flow

Two Separate Header Variables
Defined Using Running Headers

רשימי

נ"י ע"ב

הבא על יבמתי

רמזי

נב

וסובר שלא נתמעטה אשת קטן מלהתייחס לבעלה מחסרון דעת אלא מחסרון שנים, שחידשה תורה שלא חללה על אישה תורת אשת קטן שאינו מבוגר בשנים. וכל זה ביבם קטן אבל ביבם חרש מבין שהגיע לשנות גדלותו לא נתמעטה יבמתו מלחול עלה תורת אשתו.

ראשה איש, אלא מהני ביותו למורי להפקיע זיקת כל הבית. וי"ל בזה דסבר ר"ש בעין מה שפירשו תוס' ריש פרקין אליבא דרבנמי שא"צ בר דעת לקנות יבמתו אבל נתמעט קטן מלקנות יבמתו שלא התייחס אשתו בתורה אשת אינו בן דעת. אבל חולק ר"ש בפירוש המיעוט

Separate Story automatically
positioned below previous one
Defined Using Story Tools

Straddle Head Created by
Column Flow

סימן ט

איסור כהונה של אשת ישראל שנאנסה ש"י רש"י ובעה"מ

איש לבעלה משנאנסה למד רבה שהקפיקה ממנה תורה כל תורת זנותה. ועדיין צ"ב הני נאנסה מחמת זונה דסוטה תיאסר מחמת ביאת איסורה ככל לבעלה לפסול לה באונס כדונקן בכרובות י"ד ע"ב וכמו שהוכיח הרשב"א לחלן ס"ח ע"ב מתוך הסוגיא שם.

וצ"ל בזה כמש"כ בעה"מ שסתור שמתורה לבעלה הותרה לכהונה. ובסאור הרשב"א ח"ו סי' ט"ו שלא נאנסה אשת איש לאחר מחמת פיסולו לה אלא מחמת יחס אישותה עם בעלה וכשלא נפגם אותו יחס נפקה ביאתה מתורת זנותה. וכ"ז לרבה אבל לרב ששת חסירה אשת איש שנאנסה שפגמה בה קצת יחס אישותה עם בעלה כמפ' באשת כהן שנאנסה וכן

רש"י ד"ה פסולה. צ"ב שלא הראה מקור איסור כהונה של אשת ישראל שנאנסה הבא או לעיל ל"ה ע"א. משמע שאסורה משום לאו דזונה וכן פי' תורא"ש ברש"י. וי"ל בזה ע"פ מש"כ רש"י ד"ה בעלה ופירשו הרשב"א ח"ו סי' ט"ה שראוייה כל נאנסה תחת בעלה ליאסר מחמת זונה דסוטה ואי"פ שהקליה בה תורה לבעלה ישראל נאסרה באיסור זונה דסוטה לגבי בעלה כהן. וי"ל שלמד רב ששת מזה לאשת ישראל שנאנסה שפגמה כל ביאת אונס ביחס אישותה עם בעלה וכן פי' תורא"ש ברש"י. וי"ל שחולק רבא לומר מהייתר בעלה של אשת ישראל שנאנסה שנקבעה כל תורת זונה שלה בין לענין זונה דסוטה ובין לענין זונה דכהונה.

ועדיין צ"ב כמו שהק' הרמב"ן על בעה"מ מנלה למרש דברי סמוך. וזוהי מחמת זונה ושחולק עליו רבה למד. לא יפרשם מחמת לבעלה לפסול לה וידור בו חכל. וי"ל ברש"י שנאנסה נבעלה לפסול מחמת פסול זנות ולא מחמת פסול מיוחד של ביאה לזר לכהונה. ומסאור שלא נכנס יחס אישות אשת

Columns Balanced
Separately
by Column Flow

Dynamic "Drop Words"
Created by Drop Words

עכ"ל קשה למרש בן ברש"י מטעמים הנ"ל. [ועי' לחלן מה שפי' תוס' רא"ש ברש"י]

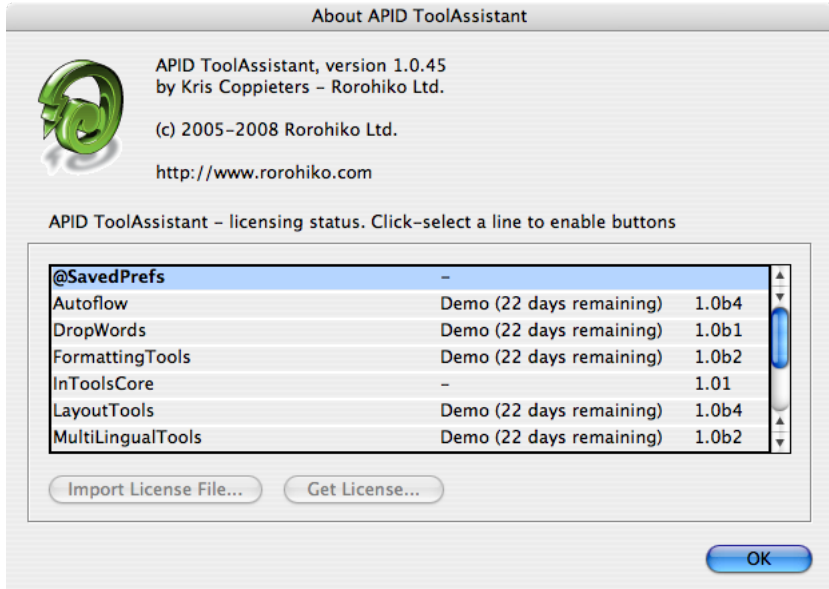
א' לאו דזונה באשת ישראל שנאנסה

ב. וז"ל ברש"י שפירש דברי רב ששת בפשטותם שאסורה אשת ישראל שנאנסה, בלאו דזונה. אבל צ"ב בזה ממה שאמר רבה [או רבא] הבא אשת כהן שנאנסה בעלה לוקה עליו משום זונה משמע לפי רבה שאין לוקה משום זונה אלא אשת כהן שנאנסה ולא אשת ישראל שנאנסה כמו שהעיר בבבב"מ הכא. ועיקר שאפי' באשת כהן שנאנסה הביאה הגמ' ב' לשונות ברבה אם לוקה עליו משום זונה או רק משום טומאה. ומאחר שלא החליטה הגמ' לפי רבה תורת זונה של אשת כהן שנאנסה מסתברא שפירשם כל לשוני רבה שלא נאסרה אשת ישראל שנאנסה משום זונה.

א. רש"י ד"ה פסולה וי"ל אם מת בעלה לא תינשא לבין עכ"ל. צ"ב למה לא הראה רש"י מקור איסור כהונה של אשת ישראל שנאנסה. וכמו בן קשה ברביו לעיל ל"ה ע"א ד"ה אשת ח"ל אע"פ שמתורה לבעלה וכו' אפי' פסולה לכהונה אם ימות בעלה עכ"ל דרי שלא הראה מקור איסור הכהונה של אשת ישראל שנאנסה. והדבר יותר קשה שם שהאריך רש"י שם ב"ה נפסלו להביא מקור פסול תרומת אשת ישראל שנאנסה מקרא דכי תהיה ולא הביא שום מקור לאיסור כהונתה. ודורק למרש שסמך בפסול כהונתה על מה שפי' בפסול תרומתה. הוא שלא רשו ר"י לזה ועוד שפנפי לחלן ס"ח ע"ב שלא נכלל איסור כהונה בקרא דכי תהיה אלא ע"י ק"ו מגרשוה ויח"ל לרש"י להוכיחה לעיל. [וגרי שפירשו תוס' שם ד"ה אע"פ ברש"י וי"ל פ"ה טעמא דשנעתיין משום ובה כהן כי תהיה וכו']

Column Flow

Installation



Column Flow is different than most plug-ins. It was developed using a product called “APID ToolAssistant” created by Rorohiko. There is a central controller provided by Rorohiko which does a lot of the low-level processing. *If you are interested in the technology behind the development, you can read the addendum in the back of the manual.*

There are three different files which must be installed for *Column Flow* to function properly: 1. APIDToolAssistantCSx.xxx (the exact name depends on your version) 2. @SavedPrefs.spln 3. InToolsCore.spln (version 1.01) 4. ColumnFlow.spln (or LayoutTool.spln if you purchased the Layout Tools bundle). **If you install the Layout Tools bundle, the ColumnFlow.spln file is not needed, and should be removed.**

Column Flow

All of these files need to be copied to InDesign's plug-ins folder. They may be copied to a sub-folder, but they must all be in the same one!

Please note: APID ToolAssistant replaces an older version of the plug-in. In the past, there were two versions of the API plug-in distributed by Rorohiko. Active Page Items Developer (APID), was the version developed to work with externally developed plug-ins. The free Active Page Items Runtime (APIR), was for plug-ins developed internally at Rorohiko. If you have either of these two plug-ins installed, you must remove them and install the APID ToolAssistant instead. The older APIR or APID plug-ins will not work. You must have the most current version of the APID ToolAssistant installed (version 1.0.45).

Shown above is the “About” window of API. This window can be brought up in two ways: 1. Select InDesign → About Plug-Ins → Rorohiko Ltd. → APID ToolAssistant... 2. API → APID ToolAssistant...

In-Tools plug-ins do not show up separately in the “About Plug-Ins” menu. Information on installed In-Tools plug-ins are only displayed in the “About” window of API. If the plug-ins are properly installed you should see the displayed window (or the equivalent Windows version).

Please note the API version number near the top of the window. Your version number must say 1.0.45 or higher. Additionally it must say “APID ToolAssistant”. If it says “Active Page Item Developer” or “Active Page Item Runtime”, you have the wrong version installed. As mentioned above, both of these versions have been replaced with APID ToolAssistant.

When in doubt: search your plug-in folder for a file whose name contains “ActivePageItem”, and replace it with the new one.

Column Flow

In the “About” window, there is a list of all installed plug-ins and their status. The first column lists the plug-ins. The second column shows the license status. If the plug-in is licensed, “Licensed For APID” will be displayed. If the plug-in is in demo mode, the word “Demo” will be displayed along with the number of days remaining until the plug-in expires. The third column shows the plug-in’s version number. When trying to determine that you have the most current version of a plug-in, please refer to the version number listed in this column.

Enabling and Disabling Plug-ins.

To enable or disable any individual plug-in, simply move the file into or out of the folder which contains the APID ToolAssistant plug-in. One simple solution would be to create two folders within your plug-in folder. Name one “API”, and the other “API disabled”. You can then easily move files back and forth.

The APID ToolAssistant is like any other plug-in, and InDesign must be restarted when it is installed or removed. However, the rest of the plug-ins do not require a restart of InDesign when they are installed or removed. Newly installed plug-ins are available in documents when they are opened. If there are open documents when you install any of the *.spln files, those documents should be closed and reopened.

Please note: In-Tools plug-ins are unique, in that menu items will not appear until a document is opened. The plug-ins will appear in the plug-in list in the “About” window, but menu items only appear after a document is opened or created.

Column Flow

Purchasing Licenses and Activation

There are two ways to purchase In-Tools plug-ins: They can be purchased from the In-Tools web site prior to activation, or they can be purchased directly from within InDesign. If the plug-ins are purchased from the web site, you will establish a login and password for activation at the time of purchase. If you purchase the plug-ins from within InDesign, the payment and activation both occur simultaneously. If you plan to purchase a plug-in package, or would like to purchase a number of plug-ins in one transaction, you should purchase them from the In-Tools web site before you initiate the activation process.

No matter how you purchase the plug-ins, the process from within InDesign is the same:

1. Select the plug-in you would like to activate.
2. Click “Get License”. This will take you to the log-in page of the In-Tools web site.

The screenshot shows a web interface for logging in or creating an account. It is divided into two main sections. The top section, titled "Customer Login", has a light blue background and contains a message: "Please login using your email address and password to continue." Below this are two input fields: "Email Address:" and "Password:", each followed by a text box. A "Login" button is positioned below the password field. The bottom section, titled "If you do not yet have an In-Tools account, create one below.", also has a light blue background and contains a message: "Please enter your email address and choose a password. You will use this password to login to your account in order to install a license from within Indesign." Below this are four input fields: "Name/Company:", "Email Address:", "Choose a Password:", and "Confirm Password:", each followed by a text box. A "Submit" button is positioned below the "Confirm Password" field.

Customer Login

Please login using your email address and password to continue.

Email Address:

Password:

Login

If you do not yet have an In-Tools account, create one below.

Please enter your email address and choose a password. You will use this password to login to your account in order to install a license from within Indesign.

Name/Company:

Email Address:

Choose a Password:

Confirm Password:

Submit

Column Flow

If you already have an In-Tools account, fill in your login and password. Otherwise create an account now. If you already paid for your plug-ins, make sure you fill in the login information you provided at the time of purchase. You *must* provide a valid e-mail address or you might not receive your license file.

3. If you have not yet paid for the plug-in you will be taken to a PayPal payment page. On successful completion of the payment, you will be returned to the log-in page.

4. After successfully completing the log-in procedure, you will either get a link to download a license file, or you will receive one by e-mail (depending on various factors). Please allow one to two business days to receive an e-mail with the license file. The license file is specific to the installation from within which you have activated the license. It will not work on a different installation, even with the same serial number. If you need to use In-Tools plug-ins with more than one installation of InDesign, you will need to purchase an additional license for each installation.

5. Once you have your license file, go back to the “About” window in InDesign, select the plug-in you are activating and click on “Import License File”. Locate the file on your hard drive and click “Open”. The status next to your plug-in will change to “Licensed”.

Please note: After the trial period of In-Tools plug-ins expire, they will only work if *both* the In-Tools plug-in *and* the APID ToolAssistant is licensed. Only one license of the APID ToolAssistant is required per installation of InDesign. If you are not sure whether your installation of the APID ToolAssistant is licensed, make sure you purchase the plug-in using the “Get License”

Column Flow

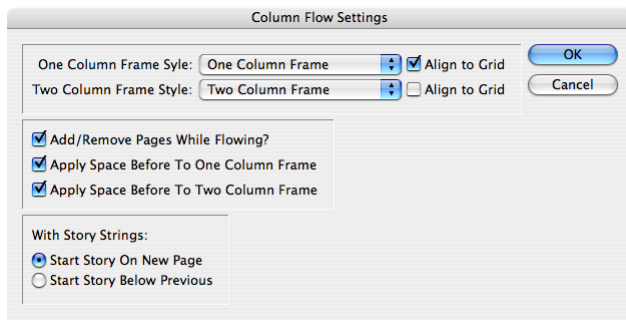
button. The In-Tools activation software will automatically determine if you require the license for APID, and create a double license if necessary.

Basic Setup

The only setup which must be done before running *Column Flow* is to create two object styles. One object style should have the proper settings for one-column frames. The other one should have the proper settings for the multiple-column frames. The multiple column frames can be assigned any number of columns. The actual number of columns in the multiple-column frames is set by the text frame properties within the object styles.

Please note: The column settings are document-wide settings. If it is necessary to use different settings in the same document, the settings must be changed before each re-flow.

Once the two object styles are set up, select API → Column Flow → Configure Column Flow. This will bring up the following dialog:



In the dialog shown, there are two drop down lists. The one labeled “One Column Frame Style” is for selecting the object style for the one-column frames. The one labeled “Two Column Frame Style” is for selecting the

Column Flow

multiple-column frames. Even though it is labeled “Two Column Frame”, any number of columns can be set in the object style.

Checking “Align to Grid” will cause the top of the respective text frame to be aligned to the document-wide baseline grid. These settings should be set up in the document *Grids Preferences*.

Enabling “Add/Remove Pages” will cause *Column Flow* to add or remove pages as needed while flowing text. If the option is not checked, text will only be flowed on pages which already have a text frame of the story currently being flowed.

The two “Add Space Before” options give the option to optionally add the “space before” setting applied to the first paragraph of the frame to the space between the frame and the one above it. The “space after” setting of the last paragraph is always applied.

The “story string” option is for use in conjunction with *Story Tools*. When flowing “story strings” (set up using *Story Tools*), each consecutive story can start either on a new page, or immediately below the previous one. (Provided there is enough room on the page.) If “Start Story Below Previous” is selected, the alignment and spacing settings will be the same as for within one story.

Running Column Flow

To Run *Column Flow*, You simply select API → Column Flow → Flow... All flowing is done to fit within the page margins and can be flowed on five different levels.

1. **Current Page:** This option flows the selected story on the current page, and fits as much text as possible using the current flow settings. It uses the

Column Flow

selected frame as the vertical starting point. This option should be used if a lot of manual tweaking is to be done.

2. Rest of Story: This option will flow the rest of the story starting from the selected text frame. Pages will be added or removed if this option is selected in the Column Flow Options.

3. Whole Story: This will re-flow the entire selected story.

4. Story String From Selection: This option will be grayed-out, unless a story string was set up using the Story Tools plug-in. If the Story String was properly set up, this option will flow the entire string starting from the selected frame. Story String Flow will always add and remove pages as necessary, regardless of the settings in the Column Flow Settings.

5. Whole Story String: This will flow the Story String (if set up) starting from the first story in the string.

■ ■ ■ ➡ *Column Flow* works much quicker when it creates pages and text frames on the fly. It is therefore recommended when flowing large amounts of text, to remove all subsequent pages, and run *Column Flow* on overset text.

Paragraph Settings

As mentioned earlier, the number of columns are set at the paragraph level. The method for setting the number of columns is simply a number prefix to the paragraph style name. For example: A paragraph named “1.Header” is defined as a one-column frame. A paragraph named “2.Body Text” is defined as a multiple-column frame. Only numbers 1 and 2 may be used as prefixes. The number 2 prefix can be used for more than two columns by setting the appropriate number of columns in the object style.

Column Flow

In the example used before, the style “1.Header” has a dot after the number. This dot indicates that it is a one-column *header*. If the style has the dot following the “1”, it will *always* be placed above the following multiple-column frame. If the placement of the frame is not required to be above the following frame, the dot should be left out.

Knowledge of this information is not necessary to run *Column Flow*. If any styles are encountered while flowing which were not properly set up, *Column Flow* will prompt for the proper settings. The style names will be automatically adjusted as necessary.

Please note: Because the “Basic Paragraph” and “No Paragraph” style names cannot be changed, these styles cannot be used on text when Column Flow will be run.

■➡ To automatically create two multiple column frames one immediately after the other: Insert a blank one column paragraph with a leading of zero. This paragraph will act as a “column breaker”, and will cause the text above it to be balanced across the columns. The text after the blank paragraph will be balanced independently.

Addendum

What is “APID ToolAssistant”?

Classically, there are only two ways to automate InDesign. One way is by scripting. Scripts are a series of commands written in one of the three supported scripting languages — AppleScript for the Macintosh, Visual Basic for Windows, or ExtendScript for both platforms. ExtendScript is Adobe’s version of javascript. For scripts to run, they must be placed in the applica-

Column Flow

tion script folder and explicitly run. For automation to be truly automatic, it requires “event processing”. This means that certain events trigger specific processes to take place. There is limited event-triggered scripting available in CS3.

To achieve true integration, plug-ins must be programmed using C++. Developing C++ plug-ins is a very involved, and lengthy process. APID ToolAssistant is a plug-in which allows very fine grained event processing using ExtendScript. It allows for creation of advanced plug-ins in a fraction of the time required when programming using C++. It also aids in the creation of hybrid plug-ins which mix ExtendScript and C++ for maximum efficiency.

Without the APID ToolAssistant, it would not have been possible to create the collection of plug-ins we offer in the same amount of development time. This increased programming efficiency means more functionality for the end user and lower prices.

Additionally, APID ToolAssistant offers the ability to attach scripts to specific objects. These attached scripts can be run automatically when triggered by specific events. Anyone who has a licensed version of the APID ToolAssistant plug-in installed can create and use these attached scripts. There are also additional scripting properties and methods which are usable by scripters. For more information see Rorohiko’s web site.

Column Flow

Acknowledgements

We wish to thank the many people who have helped make In-Tools plug-ins possible.

To those who give graciously of their time and expertise on the InDesign scripting forum: thank you for introducing us to automating within InDesign. Most specifically, Dave Saunders, Olav Kvern, and Peter Kahrel.

To Kris Coppieters, thank you for your incredible support throughout the entire development process. Your help with product improvements and with coding tips and techniques has been incredible. Your support has been above and beyond what we could have reasonably expected. It has really been a pleasure working together. Thank you.

To all our beta testers, thank you for the valuable input which helped shaped our plug-ins. To Brad Walrod: a special thank you for your unrelenting comments and suggestions. To Peter Gold and Raphael Freeman: thank you for your many useful suggestions.

Column Flow

License Agreement

Please read the following document carefully!

This is a legal agreement (the Agreement) between you and Print Israel LLC (In-Tools), the developer of the In-Tools software. This Agreement pertains to your use of the In-Tools software and documentation which are provided to you by In-Tools (collectively, the Software). By copying, installing, or otherwise using the Software, you accept all the terms and provisions of the Agreement.

Terms of Use

The provisions of the [In-Tools Privacy Policy](#) are incorporated herein and made a part hereof.

License

This Agreement grants you a personal, non-exclusive, non-transferable, non-sublicensable right to use one copy of the Software for use on a single computer and/or workstation for each license that you purchase. You may try the Software before purchasing a license, for the specified amount of time in the materials accompanying the Software. YOU UNDERSTAND AND AGREE THAT BY USING THE TRIAL SOFTWARE, AFTER THE AMOUNT OF TIME YOU MAY NOT BE ABLE TO CONTINUE TO USE THE SOFTWARE UNLESS YOU PURCHASE A LICENSE.

In-Tools reserves all rights in the Software not expressly granted herein, including without limitation ownership and proprietary rights.

License Restrictions

You may not reverse engineer, decompile or disassemble the Software. The restrictions contained herein apply equally to any updates that may be provided to you by In-Tools.

Intellectual Property Rights and Third Party Materials

All service marks, logos, trade names, trade dress, and trademarks of In-Tools (collectively Marks) are the exclusive property of In-Tools and nothing in this Agreement

Column Flow

shall grant you the license to use such Marks. All intellectual property rights in the Software are owned exclusively by In-Tools and are protected by United States of America copyright laws and international copyright treaty provisions. Any violation of the terms set forth herein is expressly prohibited by law and may result in severe civil and criminal penalties.

Disclaimer of Warranties

ALL SOFTWARE PROVIDED BY IN-TOOLS ARE PROVIDED AS IS. IN-TOOLS AND ITS AGENTS, PARTNERS, OR EMPLOYEES MAKE NO REPRESENTATION OR WARRANTY TO YOU OR ANY OTHER PERSON OR ENTITY, WHETHER EXPRESS, IMPLIED, OR STATUTORY, AS TO THE DESCRIPTION, QUALITY, TITLE, NON-INFRINGEMENT, MERCHANTABILITY, COMPLETENESS, OR FITNESS FOR A PARTICULAR USE OR PURPOSE AS TO THE SOFTWARE PROVIDED TO YOU, OR AS TO ANY OTHER MATTER, ALL SUCH WARRANTIES HEREBY BEING EXPRESSLY EXCLUDED AND DISCLAIMED.

NEITHER IN-TOOLS NOR ANY OF ITS AGENTS, PARTNERS, OR EMPLOYEES WARRANTS THAT THE SOFTWARE OR SERVICES ARE ERROR FREE OR WILL OPERATE WITHOUT CAUSING LOSS OR INTERRUPTION YOUR COMPUTER USAGE OR DATA. YOU ASSUME TOTAL RESPONSIBILITY AND RISK FOR YOUR USE OF THE SOFTWARE.

Limitation of Liability

IN NO EVENT SHALL IN-TOOLS, ITS AFFILIATES, SUBSIDIARIES, PARENT COMPANIES, AGENTS, NETWORK SERVICE PROVIDERS, PARTNERS, OR EMPLOYEES BE LIABLE TO YOU OR ANY THIRD PARTY IN ANY RESPECT FOR ANY COSTS OR DAMAGES ARISING EITHER DIRECTLY OR INDIRECTLY FROM THE USE OF IN-TOOLS SOFTWARE INCLUDING WITHOUT LIMITATION ANY ACTUAL, INCIDENTAL, CONSEQUENTIAL, EXEMPLARY, PUNITIVE, RELIANCE OR SPECIAL DAMAGES, OR FOR ANY LOSS OF REVENUE, PROFITS, USE, DATA, GOODWILL OR BUSINESS OP-

Column Flow

PORTUNITIES OF ANY KIND OR NATURE WHATSOEVER, ARISING IN ANY MANNER FROM ANY CAUSE OF ACTION OR CLAIM RELATING TO THIS AGREEMENT, TO THE SERVICES PROVIDED BY IN-TOOLS OR TO THE USE OF THE SOFTWARE. THIS LIMITATION OF LIABILITY APPLIES EQUALLY TO ANY THIRD PARTIES WITH WHOM IN-TOOLS ENTERS INTO A BINDING AGREEMENT TO MARKET, DISPLAY AND/OR DISTRIBUTE THE SOFTWARE TO END USERS AND SUCH THIRD PARTIES SHALL NOT BE LIABLE TO YOU OR ANY OTHER THIRD PARTY FOR ANY OF THE DAMAGES SET FORTH ABOVE.

Export Control Laws.

You agree to comply with all laws, rules and regulations applicable to the export of the Software. Specifically, you shall not export, re-export or transship the Software, or the direct product thereof, in violation of any United States laws and regulations which may from time to time be applicable. None of the Software or underlying information or technology may be downloaded or otherwise exported or re-exported (i) into, or to a national or resident of, Cuba, Iran, Iraq, Libya, North Korea, Sudan, Syria or any other country to which the U.S. has embargoed goods; or (ii) to anyone on the U.S. Treasury Department's list of Specially Designated Nationals or the U.S. Commerce Department's Table of Denial Order. By downloading or using the Software, you are agreeing to the foregoing and you are representing and warranting that you are not located in, under the control of, or a national or resident of any such country or on any such list.

Jurisdiction and Other Provisions

This Agreement and the relationship between In-Tools and you shall be governed in accordance with the laws of the State of New York. Any dispute between you and In-Tools regarding this Agreement will be subject to the exclusive jurisdiction of the state and federal courts in the State of New York. You agree to submit to exclusive jurisdiction in the State of New York, and you expressly waive all defenses to jurisdiction.

Column Flow

This Agreement is the entire agreement between you and In-Tools relating to your use of the Software and supersedes any other communications or advertising with respect to the Software. If any provision of this Agreement is held invalid, the remainder of this Agreement will continue in full force and effect. In-Tools failure to insist upon or enforce strict performance of any provision of this Agreement shall not be construed as a waiver of any provision or right. Neither the course of conduct between the parties nor trade practice shall act to modify any provision of this Agreement. In-Tools may assign its rights and duties under this Agreement to any party at any time without notice to you.

Modifications of Agreement

In-Tools may modify this Agreement at any time without providing notice to you. Such modification will be made by posting a revised agreement on its web site and such modification shall be deemed effective immediately upon posting of the modified Agreement. Your continued access or use of the Software or Services shall be deemed your acceptance of the modified Agreement. You agree to check our web site periodically to review such modifications.

Termination or Modifications of Software

You may terminate this Agreement at any time. The In-Tools may immediately terminate the Agreement if you breach any representation, warranty, agreement or obligation contained or referred to in the Agreement. Upon termination, you must dispose of the Software and all copies or versions of the Software by destroying the Software. In-Tools reserves the right to modify the Software at any time without providing notice to you. In-Tools right to modify the Software applies to all or any aspect of the Software.

YOU ACKNOWLEDGE THAT YOU HAVE READ THIS AGREEMENT AND UNDERSTAND IT AND THAT, BY USING THE SOFTWARE, WEB SITE, YOU AGREE TO BE BOUND BY ITS TERMS AND CONDITIONS.